



McCrae Homestead Coastal Group Inc.

A0035176R ABN 84 215 491 899

Caring for the local environment

Newsletter Autumn 2022

Welcome to the 2022 Autumn issue of the newsletter.

UPDATES

Working bees returned in February to bring some normalcy, however the new Omnicron strain of the virus is causing a havoc across the Friends groups and Shire bushland management teams as people must isolate after testing positive.

In addition, scheduled planting was put on hold until a letterbox drop was done to keep local residents abreast of the work being completed under our projects.

Melbourne Water Liveable Communities Liveable Waterways 2021/2022

Handweeding, brushcutting and spraying carried out along the creek from Pt Nepean Road past the orchid site to the beach.

Looking to plant 200 tubestock in due course.

Coastcare Community Grants 2021

Some good work has been done in weed control in this area but unfortunately is at a bit of a standstill at the moment, with no work able to be completed in the last couple of months.

We are assessing the situation to determine if we need to seek an extension of time to complete the project.

Port Phillip Bay Fund 2021

Despite everything, work on the PPBF project has been progressing well. Much of the initial work was removal of woody weeds - often needing a chainsaw! Starting at the eastern end of 'our' patch, the material was chipped on site and sprayed back into the site. In a sea spurge sweep 36 plants were collected - excellent! We are hoping to plant the 150 Banksia tubes soon.

Placemaker Community Grant 2022

We are really pleased to announce that we have been successful in obtaining funding from the Shire to replace the information panels at the Rotunda. We hope to commence work on this soon.

Other Grants

Coastcare 2022/Port Phillip Bay Fund 2022

We have made submissions to both these funding programmes and are awaiting advice as to our success or otherwise.

MPS Budget 2022/2023 submission

We have submitted a request to the MPS Budget 2022/2023 for an allocation to be set aside to provide for ongoing works for the lower section of Eyrie Creek from where it crosses Pt Nepean Road and enters the foreshore to flow into the Bay, to maintain and build on the great work already done following our successful request to the 2020/2021 Budget.

......***

Office Bearers:

Secretary:	Margaret Wilson	5986 4159	Treasurer:	Jenny Warfe	5987 1583
PO Box 29, McCrae Vic 3938 email: mhcg@mccraecoastalgroup.org.au web: www.mccraecoastalgroup.org.au					

COMMUNITY WORKING BEES WITH McCRAE YACHT CLUB

In April and the first week in May, we held joint working bees with the McCrae Yacht Club to clear away the infestation of polygala which is rampant on the dune to the east of the yacht club. Work on this site was covered by the Shire bushland budget.

It was exacting work as many of the shrubs had been able to quietly mature for years and were quite substantial requiring much brute strength to remove them!



We also did a litter sweep amazed at what is just dropped on the sand without a thought.

We will look to hold further community working bees with the yacht club later in the year and are hopeful that they will be amenable to a concentrated indigenous planting in the cleared sections to hold back any

further growth of this invasive species.

Thanks to Neil Wilson for suggesting this community event.

****...****...****

CARPARKING

We are awaiting further communication from the Shire on a meeting to be held with Shire Officers and perhaps our local Ward Councillors to discuss the matter of an overload of indiscriminate carparking on the McCrae foreshore in particular, and the peninsula coastline in general, destroying the natural habitat and environment.

With so many more day-trippers and holiday makers making a beeline for this beautiful part of the world, carparking in general is now a very real and decisive issue for the Shire.

We will keep you informed of progress.

****...****...****

PATHWAYS FOR CARERS & MHCG

On Friday 6th May, as part of the *Pathways for Carers*, programme co-ordinated by Mornington Peninsula Shire, Jenny Warfe and Margaret Wilson led a group of Carers on a walk along the Bay Trail from the light house to Anthony's Nose – right in McCrae territory!

Pathways for Carers is a Victorian Government funded programme to enable Carers or disabled people to get out once a month to socialise and

connect with nature. We talked about the history of the lighthouse, the local Bunurong people and Georgiana & Andrew McCrae along with pointing out indigenous plants along the Bay Trail and talking about the work which the MHCG is funded to carry out, fielding questions as best we could.

The morning culminated in morning tea at a local café. By all accounts it was a successful morning with most people saying that they had learned many new and interesting things.

If you'd like to find out more about this programme – which was started in the Eastern Suburbs in 2015, click on: <https://www.pathwaysforcarers.com.au>

****...****...****

ROSEBUD FORESHORE MASTERPLAN STAKEHOLDER SESSIONS

Although MHCG has contributed to prior calls for comment on the Rosebud Masterplan, it has been precluded from attending the recent community stakeholder consultation sessions.

This was disappointing but we can say that when we raised the issue with the Shire, it was agreed that a follow-up meeting could be arranged.

However, that was some weeks ago and we have yet to hear what arrangements have been made for a further meeting.

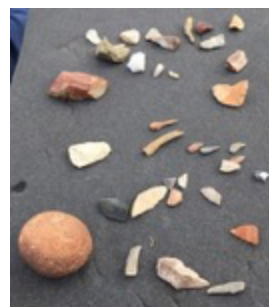
****...****...****

CULTURAL AWARENESS AND HERITAGE WITH BUNURONG LAND COUNCIL

Co-incidentally we received advice of further cultural sessions just as this newsletter was being finalised. If you can, we would recommend you attend one. It's important for us to be aware of the cultural significance of the foreshore we work on and how it relates to the project funding we apply for.

....

On 22nd April, Jenny Warfe and Margaret Wilson attended a *Cultural Awareness and Heritage Information Session* arranged by the Safety Beach



Friends Group and presented by a representative from the Bunurong Land Council who talked to us about identifying items of indigenous culture.

Office Bearers:

Secretary:	Margaret Wilson	5986 4159	Treasurer:	Jenny Warfe	5987 1583
PO Box 29, McCrae Vic 3938 email: mhcg@mccraecoastalgroup.org.au web: www.mccraecoastalgroup.org.au					

Artifact items can be tiny – half a little fingernail, or smaller and can be rocks or shells as well as fragments of wooden items or bones. Also, it is possible to find rock artifacts in an area where that particular type of rock does not normally exist. This is because of the trading done between indigenous mobs as they moved about their lands. On the Mornington Peninsula it is not unusual to find rock artifacts originating from the Gippsland or Lilydale areas.

Bunurong country extends from Wilson's Promontory to the Werribee River and north to the Dandenong Ranges and the people are known as the 'water people'.

Individual mobs or family groupings would move every three months, returning to the same campsite every time. (Not unlike the happy Rosebud campers returning year after year!) They were careful in not to deplete the natural resources so that food was available to all who called in to that site. They usually performed routine activities in these camps so that by the time they returned 18 months later the area had regenerated.

We'll bring more info about these sessions in a future newsletter.

****...****...****

TREE VANDALS

It was with outrage that evidence of unlawful destruction of indigenous trees along the eastern end (Anthony's Nose) of the Bay Trail was discovered and a distinct suspicion that residents along Pt Nepean Road may have been responsible.



The damage was reported to the Shire and eventually a sign was erected to alert the residents and allcomers of the ramifications of illegally removing local vegetation. We were rather disappointed that one of the taller/more substantial signs was not installed, but this is at least something.

If you ever have evidence or a suspicion that vegetation has been removed illegally, please report it to the Shire.

****...****...****

INCIDENT AFTER WORING BEE

After the working bee on 10th April, when several members were in the Rotunda chatting about the recent tree vandalism, a car was reversed into the northern pathway damaging the Correa growing there – not a parking spot but ignorant people park there willy nilly! You'd have thought the driver would have moved his car forward and perhaps apologised to us but no, he got out and stood in the Rotunda saying nothing.

We indicated we were leaving and he could picnic there, but he got straight back into his car and deliberately drove with force forward and back twice. It seemed he might ram the Rotunda wall and was only stopped by members banging on the car boot and remonstrating with him. He was very dismissive of the damage he had done and scornful that the police would be interested in the matter. We took photographs of the car number plate, the driver and the damage. The car was driven out of that space and re-parked in another spot and the driver went to the beach.

Next day it was decided that we should report this to the police on principle as it was quite a confronting/dangerous incident. The second deliberate reversing actions were classed as criminal intent and further investigation was undertaken by the police.

The issue was then referred to the Shire as the responsible authority for that section of the foreshore to determine whether to proceed with prosecution. We suspect there will be no other action taken as in the great scheme of things it is probably counted as a small issue.

However, we feel vindicated in that at least that arrogant individual who didn't give a toss, was interviewed and had to account for his actions.

****...****...****

A LITTLE BIT OF HISTORY

Extract from the Family Tree Circles website
<https://www.familytreecircles.com/a-brief-history-of-rosebud-victoria-australia-69672.html>

ARTHURS SEAT PRE-EMPTIVE RIGHT.

The Arthurs Seat Run was poor grazing country and the Burrells were looking to sell it before long. They probably made as much money from timber as they did from cattle. The pre-emptive right was bought in two parts. The part of crown allotment 1, section B, Wannaeue between the Cape Schanck Road and the foreshore was retained by the Burrells and the related

Office Bearers:

Secretary:	Margaret Wilson	5986 4159	Treasurer:	Jenny Warfe	5987 1583
PO Box 29, McCrae Vic 3938 email: mhcg@mccraecoastalgroup.org.au web: www.mccraecoastalgroup.org.au					

Coburn family of “Springbank” with the Bartels and Cornell families also being early residents of what became known as Dromana West until CONFUSION OF NAMES caused the area to be named McCrae.

Crown allotment 2 section B south of the junction of The Avenue and Cape Schanck Rd, was leased or sold to such as George Burston of Fitzroy who was the occupant of 368 acres of the P.R. by 1919.

The Burrell wing of the McCrae Homestead has much information about the Burrells and their relatives, including John Twycross, grantee of c/a 12, Rosebud Fishing Village, whose beautiful watercolour paintings and pioneering photography can be inspected. It is because of an environmentally conscious member of the Burrell family that the McCrae section of the foreshore remains so beautiful today.

Section 20, WANNAEUE VILLAGE.

Apart from its poor grazing capacity, Georgiana’s McCrae’s fear that her homestead block would be swallowed by the proposed Dromana Township with a two mile frontage to the Bay was responsible for Andrew’s decision to sell the lease to the Burrells. The 185 chain (3.7 km) frontage between McCulloch St, Dromana and The Avenue, McCrae, did not interfere with the homestead block and included the P.R. between Dromana Township and the Wannaeue Village Reserve.

As the Government wanted to ensure demand for township blocks exceeded supply, in order to get the best price possible for them, they decided to reserve the Wannaeue Village site where the water was too shallow for a pier, until the demand became apparent, and so that it earned money for the Government coffers until such time, they apparently leased the village site to Captain Henry Everest Adams.

In much the same way that the story about Rosebud being originally called Banksia Point originated, Captain Adams’ lease became a 750 acre grant in the family folklore (as well as his being the illegitimate son of Lord Vivian and marrying Miss May in England!)

Wannaeue Village, between The Avenue and the line of Parkmore Rd, was not alienated until the 1870’s, with the Adams family snapping up all the land on the west side of Wattle Rd (now Wattle Place), being the grounds of Hopetoun House, and all the land between South Rd and the Cape Schanck Road.

Thanks to Jenny Warfe for unearthing this gem.

****... ****... ****

COVID UPDATE

Just a reminder that it is still a requirement that volunteers are double vaccinated and must be able to show evidence of that at working bees.

Office Bearers:

Secretary: Margaret Wilson 5986 4159 President: Len Warfe 5987 2537
 Treasurer: Jenny Warfe 5987 1583
 PO Box 29, McCrae Vic 3938 email: mhcg@mccraecoastalgroup.org.au web: www.mccraecoastalgroup.org.au

RAINFALL IN MCCRAE

Year	Annual
2013	854.50 mm
2014	652.55 mm
2015	631.50 mm
2016	773.50 mm
2017	673.00 mm
2018	591.00 mm Lowest since 2006
2019	621.50 mm
2020	689.00 mm
2021	682.50mm
2022	136.00mm to 30.04.2022

WORKING BEES



Working Bees - First and second Sunday of the month except January - 10.00am at the Rotunda.

Just turn up!

Volunteers do need to be a member of the group and registered with the Shire, but this can be done on the day. You will be provided with gloves, safety glasses, sun hat, safety vest and tools.

****... ****... ****

FUNDING SUPPORT

Thank you to our supporters for providing funds or in-kind support to enable MHCG to continue the vital work we do on the McCrae foreshore:



Our website is maintained by:

Mornington Peninsula Websites
www.morningtonpeninsulawebsites.com.au